



●
激光，改变世界的力量

华盟激光 智造未来

Intelligent future.....

我们致力于为工业激光领域
提供自动化，信息化生产智能解决方案

南京华盟机械科技有限公司
Nanjing Huameng Machinery Technology Co., Ltd

地址：南京市溧水区明觉工业园

Add: Mingjue Industrial Park, Lishui District, Nanjing

Web: www.camtinc.com

M: +86 159 7551 9810

E: info@camtinc.com



单平台敞开式光纤激光切割机
Single platform open
fiber laser cutting machine

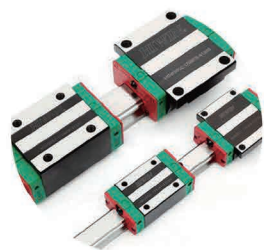
性能特点
Feature

龙门双驱结构，刚性好，运行平稳
机身钢板焊接并经大型回火炉退火
整机采用开放式一体化设计，安装方便快捷，上下料方便移机免调试。1500MM 机型可直接进集装箱
具有免维护、使用成本低、功能强、稳定性高、经济实惠等优点

Gantry double drive structure,good rigidity and stable operation Fuselage steel plate is welded and annealed in large tempering The whole machine adopts open integrated design,which is furnace convenient for installation,loading and unloading,and can be transferred without debugging.The 1500mm model can be directly put into the container
It has the advantages of maintenance free,low cost,strong function,high stability and economic benefits



日系 / 台系齿轮齿条
Japanese and Taiwan gear rack



日系 / 台系直线导轨
Japanese and Taiwan linear guide



日系、台系精密减速机
Japanese and Taiwan precision reducers



Product Parameter List/ 产品技术参数

加工范围	3000*1500mm	4000*1500mm	4000*2000mm	6000*1500mm	6000*2000mm	6300*2200mm	6300*2500mm	8300*2200mm	8300*2500mm	13000*2500mm
X 轴行程	1500mm	1500mm	2000mm	1500mm	2000mm	2200mm	2500mm	2200mm	2500mm	2500mm
Y 轴行程	3000mm	4000mm	4000mm	6000mm	6000mm	6300mm	6300mm	8300mm	8300mm	13000mm
Z 轴行程	140mm	140mm	140mm	140mm	140mm	140mm	140mm	140mm	140mm	140mm
激光功率	1500/2000/3000/4000/6000/8000/10000/12000/15000/20000W/30000W/ 其他									
X/Y 轴定位精密	≤ ±0.03mm/min									
X/Y 轴重复定位精密	≤ ±0.02mm/min									
最大定位速度	120m/min									

* 展示参数仅供参考，实际参数信息以产品实际为准

特殊设计 - 智能分区抽风

专门为解决切割过程中的烟尘、粉尘特别设计的智能自动分区抽风系统 - 利用机床设备中本有的激光内通道为风道，在控制成本的同时提升除尘的效果。

The intelligent automatic partition ventilation system specially designed to solve the problem of smoke and dust in the cutting process uses the inherent laser internal channel in the machine tool equipment as the air duct to improve the dust removal effect while controlling the cost.





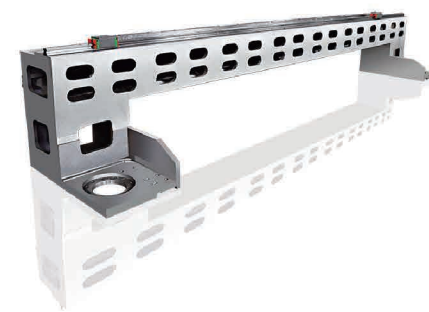
交换台敞开式光纤激光切割机

Exchange platform open
fiber laser cutting machine

性能特点 Feature

整机采用开放式分体式设计
交换平台，节约上下料时间，满足客户不间断切割需求
采用传统稳定的龙门结构，高强度一体铸造铝合金横梁
成熟的加工系统，友好便利的操作软件，保证切割加工的有序进行

The whole machine adopts open split design
Exchange platform to save loading and unloading time and meet customers' continuous cutting needs
It adopts traditional stable gantry structure and high-strength cast aluminum alloy beam
Mature processing system and friendly and convenient operation software ensure the orderly progress of cutting processing



铸铝横梁 Cast aluminum beam

相对于钢横梁，铸铝横梁极大减轻了重量，减轻伺服电机载重负荷，降低惯量，在节省电力成本的同时，同时让设备拥有了极高的运行速度。

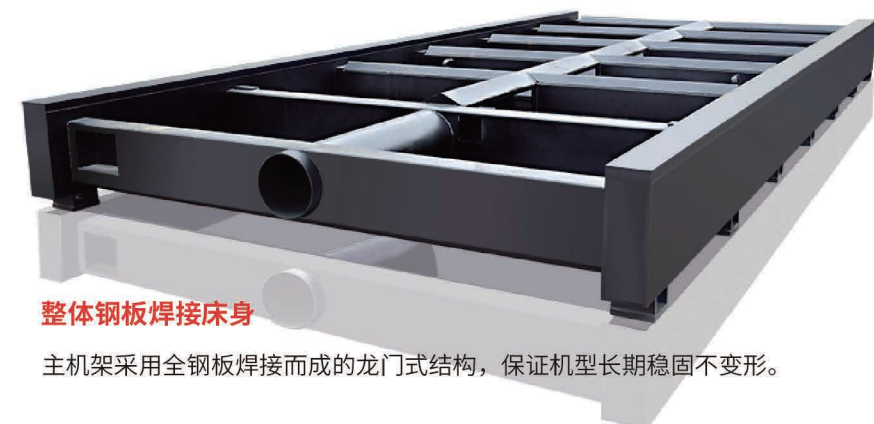
Compared with the steel beam, the cast aluminum beam greatly reduces the weight, reduces the load of servo motor, reduces the inertia, saves the power cost, and at the same time makes the equipment have a very high running speed.



Product Parameter List/ 产品技术参数

加工范围	3000*1500mm	4000*1500mm	4000*2000mm	6000*1500mm	6000*2000mm	6300*2200mm	6300*2500mm	8300*2200mm	8300*2500mm	13000*2500mm
X 轴行程	1500mm	1500mm	2000mm	1500mm	2000mm	2200mm	2500mm	2200mm	2500mm	2500mm
Y 轴行程	3000mm	4000mm	4000mm	6000mm	6000mm	6300mm	6300mm	8300mm	8300mm	13000mm
Z 轴行程	250mm	250mm	250mm	250mm	250mm	250mm	250mm	250mm	250mm	250mm
激光功率	1500/2000/3000/4000/6000/8000/10000/12000/15000/20000W/30000W/ 其他									
X/Y 轴定位精密	≤ ±0.03mm/min									
X/Y 轴重复定位精密	≤ ±0.02mm/min									
最大定位速度	120m/min									

* 展示参数仅供参考，实际参数信息以产品实际为准



整体钢板焊接床身

主机架采用全钢板焊接而成的龙门式结构，保证机型长期稳固不变形。



交换台大包围光纤激光切割机

Exchange platform enclosed
fiber laser cutting machine

性能特点
Feature

封闭式加工环境，防尘、防烟、防辐射、安全环保
专属光纤波长可视防护窗，可实时查看切割加工情况
标配分区抽风系统，配激光专业抽风机，净化车间环境
强大的切割工艺数据库支持最新确保所有厚度板材快速切割，实现最大加工效率与顶级切割品质

Closed processing environment, dust, smoke, radiation, safety and environmental protection
exclusive optical fiber wavelength visual protection window can view the cutting processing in real time
As standard, it is equipped with divisional exhaust system and professional laser exhaust fan to purify the workshop environment
The powerful cutting process database supports the latest technology to ensure the rapid cutting of all thickness plates, so as to achieve the maximum processing efficiency and top cutting quality



Product Parameter List/ 产品技术参数

加工范围	3000*1500mm	4000*1500mm	4000*2000mm	6000*1500mm	6000*2000mm	6300*2200mm	6300*2500mm	8300*2500mm	13000*2500mm
X 轴行程	1500mm	1500mm	2000mm	1500mm	2000mm	2200mm	2500mm	2500mm	2500mm
Y 轴行程	3000mm	4000mm	4000mm	6000mm	6000mm	6300mm	6300mm	8300mm	13000mm
Z 轴行程	250mm	250mm	250mm	250mm	250mm	250mm	250mm	250mm	
激光功率	1500/2000/3000/4000/6000/8000/10000/12000/15000/20000W/30000W/ 其他								
X/Y 轴定位精密	≤ ±0.03mm/min								
X/Y 轴重复定位精密	≤ ±0.02mm/min								
最大定位速度	120m/min								

* 展示参数仅供参考，实际参数信息以产品实际为准

钢板焊接刚毅如山 Cast aluminum beam

减震性能好，应力变形小，精度 50 年保持不变，稳定性高。
设备在超高加速度、速度工况下，整体机械结构保持变形小、振动低，保持极高的精度。

VS

管焊床身，力学性能差，受力不均

It has good shock absorption performance,small stress deformation,and high stability.
Under the condition of ultra-high acceleration and speed,the overall mechanical structure keeps small deformation,low vibration and high precision.

VS

Pipe welding bed,poor mechanical properties,uneven stress



品牌激光头智能自动调焦
Brand laser head Intelligent
auto focus

适用于由激光切割机系统控制的各种焦距，在切割过程中自动调节焦点，可实现不同厚度金属的最佳切割效果。

It is suitable for all kinds of focal length controlled by laser cutting machine system.The focus can be adjusted automatically in the cutting process to achieve the best cutting effect of metal with different thickness.



CYPCUT 激光割系统
Cypcut laser
cutting system

具备稳定可靠，部署方便，调试简易，生产安全，功能丰富，性能优异等特点。是目前市场上最高端的总线式专用激光切割系统。

It has the characteristics of stable and reliable,convenient deployment,simple debugging,safe production,rich functions and excellent performance.It is the most advanced bus type special laser cutting system in the market.





专业光纤激光切管机

Professional tube fiber laser cutting machine

性能特点 Feature

专用管材激光切割机共有 7 个轴组成
可实现圆管、方管、矩形管、椭圆管等各种管材的切割
实现 6 米管材的一次性形成加工，可选配 9 米、12 米等不同管长、管径切管机
设备匹配了送料轴与拉料轴，可大大减小加工尾料的浪费
能在主管上切割多个不同方向、不同直径的管材
能切割变角度坡口面
被业界称为切管神机、带料专家

The special pipe laser cutting machine consists of 7 shafts Feature
It can realize the cutting of round,square,rectangular and elliptical pipes
It can realize the one-time forming and processing of 6-meter pipe,and can be equipped with 9-meter and 12-meter pipe cutting machines with different pipe lengths and diameters
The equipment is matched with feeding shaft and pulling shaft which can greatly reduce the waste of processing tailings
It can cut multiple pipes with different directions and diameters on the main pipe
It can cut variable angle groove surface
It is known as pipe cutting machine and material expert in the industry.



自动全程气动卡盘 Automatic full stroke pneumatic chuck

一键开夹，自动定心，速度是电动卡盘的 3 倍，降低上下料等待时间；气动开夹，夹紧力大且恒定，重管不松动不打滑，保证切割精度。

One click unclamping, automatic centering, the speed is 3 times that of the electric chuck, and the waiting time for loading and unloading is reduced; Pneumatic clamping opening, large and constant clamping force, no looseness and slip of heavy pipe, ensuring cutting accuracy.

新型方形通孔结构设计

New style-square through hole structure design



Product Parameter List/ 产品技术参数

切割管材长度	6000mm	6000mm	6000mm	6000mm	9000mm/12000mm/ 等等
切割管材直径	Φ0-130mm	Φ10-160mm	Φ10-220mm	Φ25-350mm	Φ230/520/560/ 等等
激光功率	1500/2000/3000/4000/6000/8000/10000/12000/15000/20000W/30000W/ 其他				
定位精度	≤ ±0.03mm/min				
重复定位精密	≤ ±0.02mm/min				
最大定位速度	120m/min				
A/P 轴旋转	N*360 度				

* 展示参数仅供参考，实际参数信息以产品实际为准



激光切管机——半自动上料

Laser pipe cutting machine - semi-automatic feeding



整机由原料管材料架、同步送料滚轮链条输送机、伺服同步顶料器、同步伸缩送料器、数控系统、气动系统等组成。数控系统采用数控程序控制器+触摸屏。示教记忆模式编程，可以切换自动工作模式和手动模式，适合不同的工作状态。智能自动启停系统，节能环保。

The whole machine is composed of raw material pipe material rack, synchronous feeding roller chain conveyor, servo synchronous ejector, synchronous telescopic feeder, CNC system, pneumatic system, etc.

CNC system adopts CNC program controller+touch screen. Teaching memory mode programming can switch between automatic mode and manual mode, which is suitable for different working states. Intelligent automatic start stop system, energy saving and environmental protection.

激光切管机 ----- 全自动上料

Laser pipe cutting machine ----- fully automatic feeding



该切割机送料设备是激光切管机上料设备和激光切管机集成系统，主要实现某一种管材集中存放，代替人工 自动为激光切管机上料，可实现小批量，多品种生产的需要。通过 PLC 控制，实现了单一管材自动存放、自动上料，自动测长、自动送料等全过程自动化生产，能有效保障产品质量，提高生产效率，降低生产成本。

The cutting machine feeding equipment is an integrated system of the laser pipe cutting machine feeding equipment and the laser pipe cutting machine, which mainly realizes the centralized storage of a certain kind of pipe, replacing manual automatic feeding for the laser pipe cutting machine, and can meet the needs of small batch and multi variety production. Through PLC control, the whole process of automatic production such as automatic storage, automatic feeding, automatic length measurement and automatic feeding of single pipe is realized, which can effectively guarantee product quality, improve production efficiency and reduce production cost.



单平台敞开式管板一体 光纤激光切割机

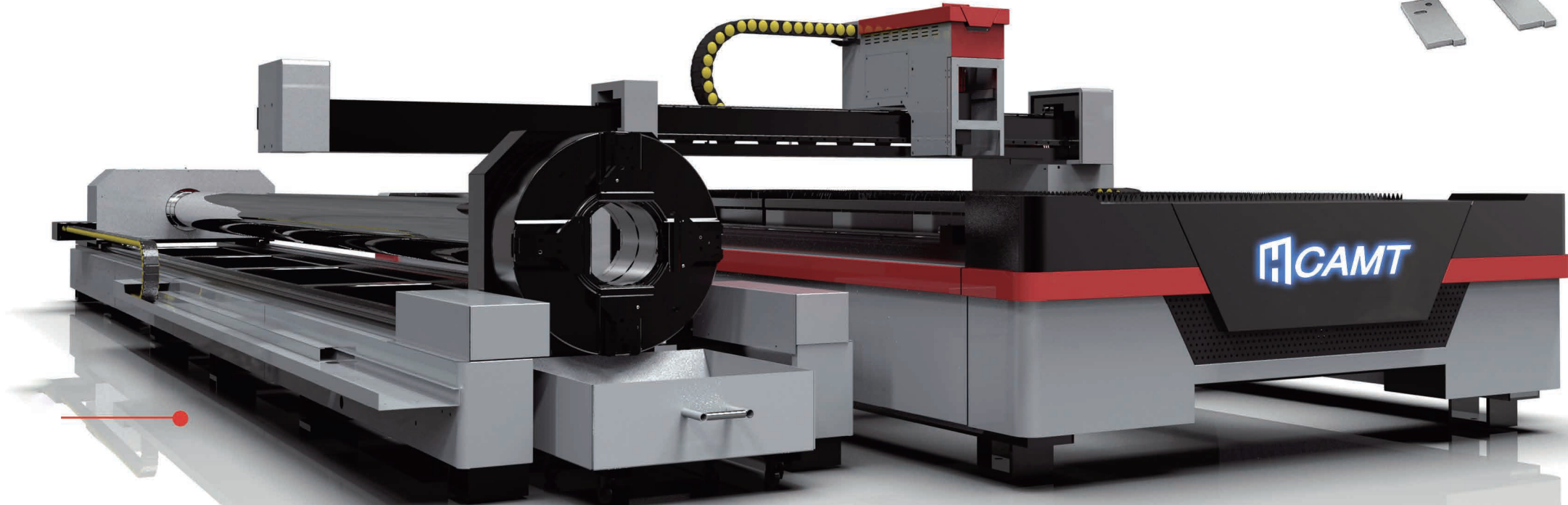
Single platform open plate tube integrated fiber laser cutting machine

性能特点 Feature

管板一体切割，互换方便，不仅能切割平板，而且能满足用户进行圆管、方管切割以及成型箱体的开孔加工需求。

The tube and plate are cut integrally and exchanged conveniently. It can not only cut flat plates, but also meet the needs of users for cutting round tubes and square tubes and opening processing of formed boxes

- 能在主管上切割多个不同方向、不同直径的圆管相贯线孔It can cut multiple intersecting line holes with different directions and diameters on the main pipe
- 能在圆管端部切割斜截端面It can cut the oblique section end face at the end of the round pipe
- 能切割与环形主管相交的支管相贯线端头It can cut the intersection line end of branch pipe intersecting with annular main pipe
- 能在圆管上切割方孔、腰型孔、圆孔It can cut square hole, waist hole and round hole on round pipe
- 能进行钢管截断The steel pipe can be cut off
- 能在方管管面切割各种图形It can cut all kinds of graphics on the surface of square tube
- 能切割不同规格钢板Able to cut steel plates of different specifications
- 能在成型箱体上开孔、切割It can make holes and cut on the formed box



自动全行程气动卡盘 Automatic full stroke pneumatic chuck

一键开夹，自动定心，速度是电动卡盘的 3 倍，降低上下料等待时间；气动开夹，夹紧力大且恒定，重管不松动不打滑，保证切割精度。

One click unclamping, automatic centering, the speed is 3 times that of the electric chuck, and the waiting time for loading and unloading is reduced; Pneumatic clamping opening, large and constant clamping force, no looseness and slip of heavy pipe, ensuring cutting accuracy.

Product Parameter List/ 产品技术参数

板材加工范围	3000*1500mm	4000*1500mm	4000*2000mm	6000*1500mm	6000*2000mm	6300*2200mm	6300*2500mm	8300*2200mm	8300*2500mm	13000*2500mm
X 轴行程	1500mm	1500mm	2000mm	1500mm	2000mm	2200mm	2500mm	2200mm	2500mm	2500mm
Y 轴行程	3000mm	4000mm	4000mm	6000mm	6000mm	6300mm	6300mm	8300mm	8300mm	13000mm
Z 轴行程	140mm	140mm	140mm	140mm	140mm	140mm	140mm	140mm	140mm	140mm
激光功率	1500/2000/3000/4000/6000/8000/10000/15000/20000W/30000W/ 其他									
切割管材长度	6000mm/9000mm/120000/ 其他									
切割管材直径	Φ165/Φ220/Φ350/Φ230/Φ520/Φ560/Φ 其他									
X/Y 轴定位精密	≤ ±0.03mm/min									
X/Y 轴重复定位精密	≤ ±0.02mm/min									
最大定位速度	120m/min									

* 展示参数仅供参考，实际参数信息以产品实际为准



交换台大包围式 管板一体光纤激光切割机

Exchange platform enclosed plate tube integrated fiber laser cuttingmachine

**性能特点
Feature**

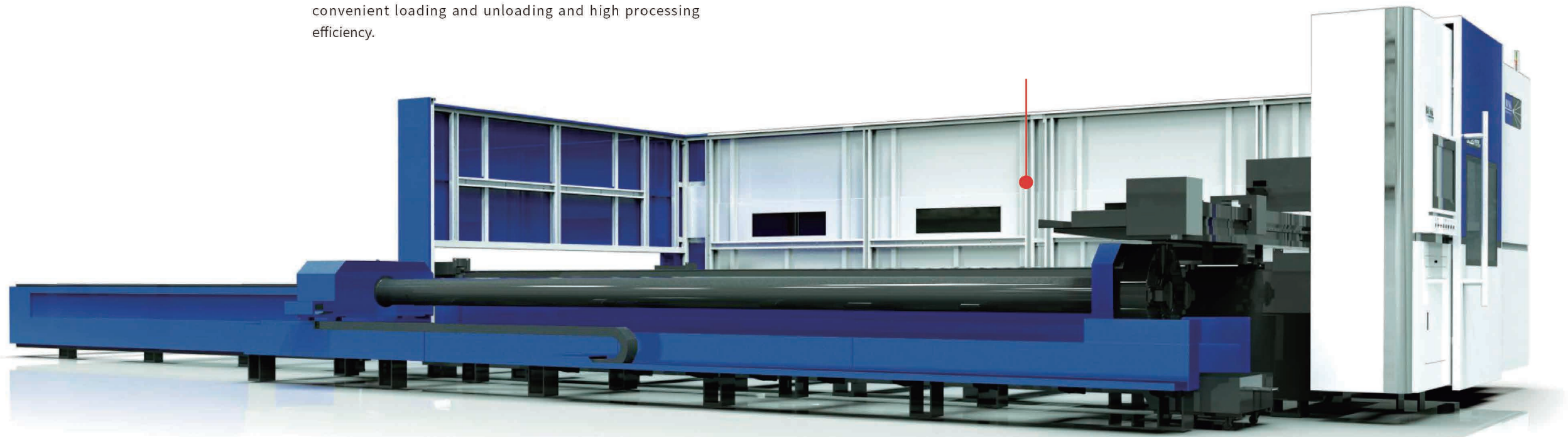
具有切管和切管两种功能，设备整体采用全封闭式激光保护罩，整体美观，安全环保。同时标配专用的交换平台，交换速度快，上下料方便，加工效率高。

It has two functions of pipe cutting and pipe cutting. The whole equipment adopts a fully enclosed laser protective cover, which is beautiful, safe and environment-friendly. At the same time, it is equipped with a special exchange platform as standard, which has the advantages of fast exchange speed, convenient loading and unloading and high processing efficiency.

强大的动态性能与动力表现 Powerful dynamic performance and dynamic performance

铸铁床身减震性好、变形小，确保了长期生产的稳定性。能有效抵消频繁高速转向的作用力，是稳定品质的保障，为激光切割机恒定质量提供支持。

Cast iron bed has good shock absorption and small deformation, which ensures the stability of long-term production. It can effectively counteract the force of frequent high-speed steering, is the guarantee of stable quality, and provides support for the constant quality of laser cutting machine.



Product Parameter List/ 产品技术参数

板材加工范围	3000*1500mm	4000*1500mm	4000*2000mm	6000*1500mm	6000*2000mm	6300*2200mm	6300*2500mm	8300*2500mm	13000*2500mm
X 轴行程	1500mm	1500mm	2000mm	1500mm	2000mm	2200mm	2500mm	2500mm	2500mm
Y 轴行程	3000mm	4000mm	4000mm	6000mm	6000mm	6300mm	6300mm	8300mm	13000mm
Z 轴行程	250mm	250mm	250mm	250mm	250mm	250mm	250mm	250mm	250mm
激光功率	1500/2000/3000/4000/6000/8000/10000/12000/15000/20000W/30000W/ 其他								
切割管材长度	6000mm/9000mm/120000/ 其他								
切割管材直径	Φ165/Φ220/Φ350/Φ230/Φ520/Φ560/Φ 其他								
X/Y 轴定位精密	≤ ±0.03mm/min								
X/Y 轴重复定位精密	≤ ±0.02mm/min								
最大定位速度	120m/min								

* 展示参数仅供参考，实际参数信息以产品实际为准

搭载专业管板一体激光切割系统，支持方管、圆管、跑道型和椭圆形等拉伸管以及角钢、槽钢的高精度、高效率切割

Equipped with professional tube sheet integrated laser cutting system, it supports high-precision and efficient cutting of square tube, round tube, runway type and oval stretch tubes, angle steel and channel steel





自动化生产线

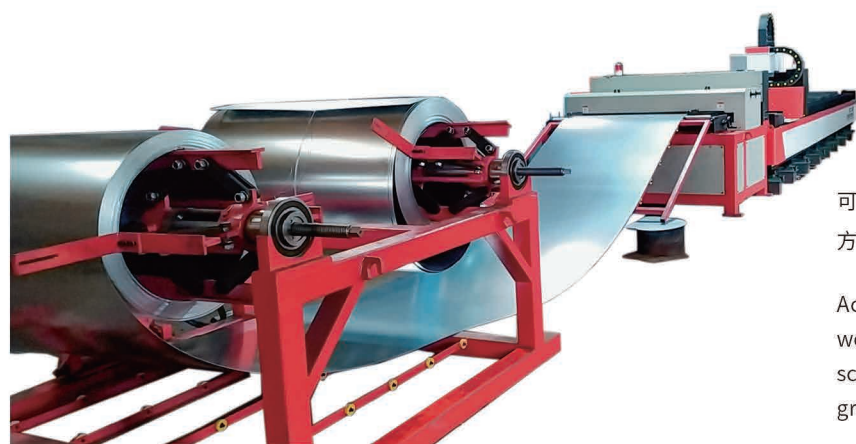
Automatic production line

激光切割柔性生产线

Laser cutting flexible production line

由多层料库系统、多台激光切割主机、自动上下料系统组成，大大提高了劳动生产效率和钣金工厂的自动化水平，促进制造业转型升级。

It is composed of multi-layer material warehouse system, multiple laser cutting hosts and automatic loading and unloading system, which greatly improves the labor production efficiency and the automation level of sheet metal factory, and promotes the transformation and upgrading of manufacturing industry.



简易开平激光生产线 Simple laser production line

可根据客户工件的工艺要求，定制卷料、校平、激光切割方案，最大限度满足客户需求。

According to the process requirements of customers' workpieces, customized coil, leveling and laser cutting schemes can be made to meet customers' needs to the greatest extent.



卷料校平激光自动生成线

Automatic laser generation line for coil leveling

可选配开卷校平送料系统和上下料系统，形成卷料加工的自动化激光切割生产线

It can be equipped with uncoiling, leveling and feeding system and loading and unloading system to form an automatic laser cutting production line for coil processing



数控三维激光切割机 / 焊接机

CNC 3D laser cutting machine / welding machine



光纤激光机器人激光切割系统能够自由、灵活的实现各种复杂三维曲线加工轨迹；采用柔韧性好，能够远距离传输激光光纤作为传输介质，不会对机器人的运动路径产生限制作用。集中式操作、移动速度快、加工精度高，稳定提供切割质量，改善工作劳动强度，降低对工人操作技术的要求和人工成本。

The laser cutting system of optical fiber laser robot can realize various complex three-dimensional curve machining trajectories freely and flexibly; The optical fiber with good flexibility and long-distance transmission can be used as the transmission medium, which will not limit the motion path of the robot. Centralized operation, fast moving speed and high processing accuracy, stable cutting quality, improve work labor intensity, and reduce the requirements for workers' operation technology and labor cost.



六轴联动、可完成空间任意轨迹；机械手与光纤传输激光焊接机完美结合，可满足各种自动化生产的需要，广泛应用于厨具、浴具、门把手及精密零部件、五金制品的自动化焊接。

Six axis linkage can complete any trajectory in space; The perfect combination of manipulator and optical fiber transmission laser welding machine can meet the needs of various automatic production. It is widely used in the automatic welding of kitchenware, Bathware, door handle, precision parts and hardware products.



为什么选择我们？

WHY CHOOSE US?

智能制造 Intelligent manufacturing

激光技术助力制造型企业转型升级，百超激光提供先进的智能技术与服务，专注与产业链伙伴一起以领先的技术和方案支持制造业发展，同时为下游客户创造更好的价值。

Laser technology helps the transformation and upgrading of manufacturing enterprises. Baichao laser provides advanced intelligent technology and services, and focuses on supporting the development of manufacturing industry with leading technologies and solutions together with industrial chain partners, while creating better value for downstream customers.

客户受益 Customer benefit

不断完善技术品质，为用户带来高速度、高精度、高稳定性的加工一直是百超激光的核心理念。百超激光是一家非常重视客户的投资回报率的企业，在产品选型阶段为客户提供量身定制的建议方案，根据客户需求进行生产制造，并将先进的工艺知识和技术融入到设备当中，为客户解决诸多技术难题，提供增值服务。

Constantly improving the technical quality and bringing high-speed, high-precision and high stability processing to users has always been the core concept of Baichao laser. Baichao laser is an enterprise that attaches great importance to the return on investment of customers. It provides customers with customized suggestions in the product selection stage, carries out production and manufacturing according to customers' needs, and integrates advanced process knowledge and technology into the equipment to solve many technical problems and provide value-added services for customers.

FOR YOUR BETTER
USE OF EQUIPMENT
WE HAVE BEEN
WORKING HARD !

为了您有**更好的设备使用**
我们一直在努力！